

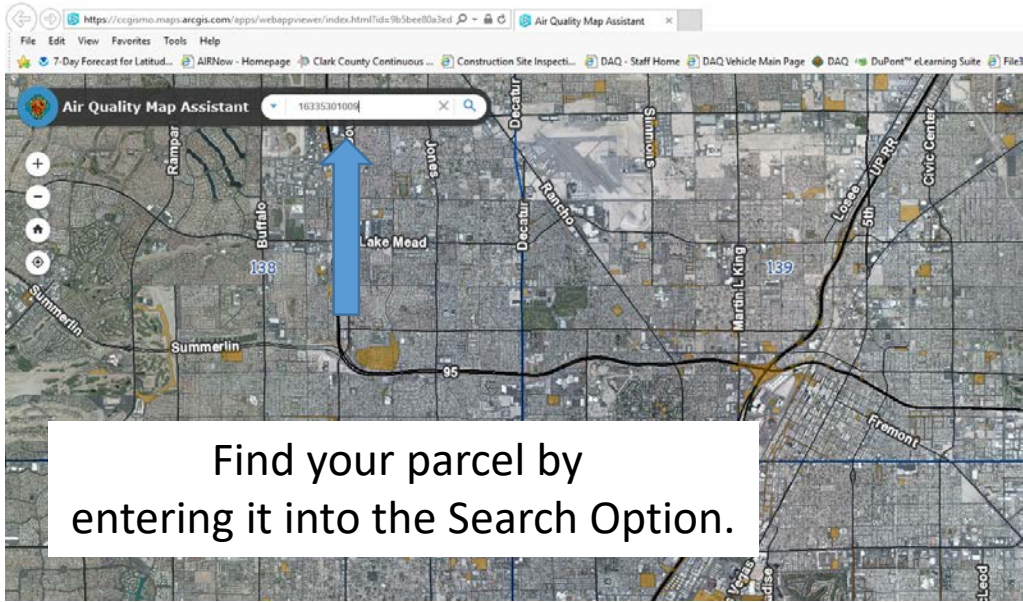
DCOP Application Map Tips

Maps

- A map must be submitted with every Dust Control Permit application
 - DAQ requires Assessor's Parcel maps, or a highlighted aerial if the project is in a remote location or if an Assessor's parcel map does not clearly show the project boundaries
 - The project boundaries and location need to be clearly identified
 - For linear portions of the project, the length and width of the disturbance must be provided on the map

Assessor's Parcel Maps

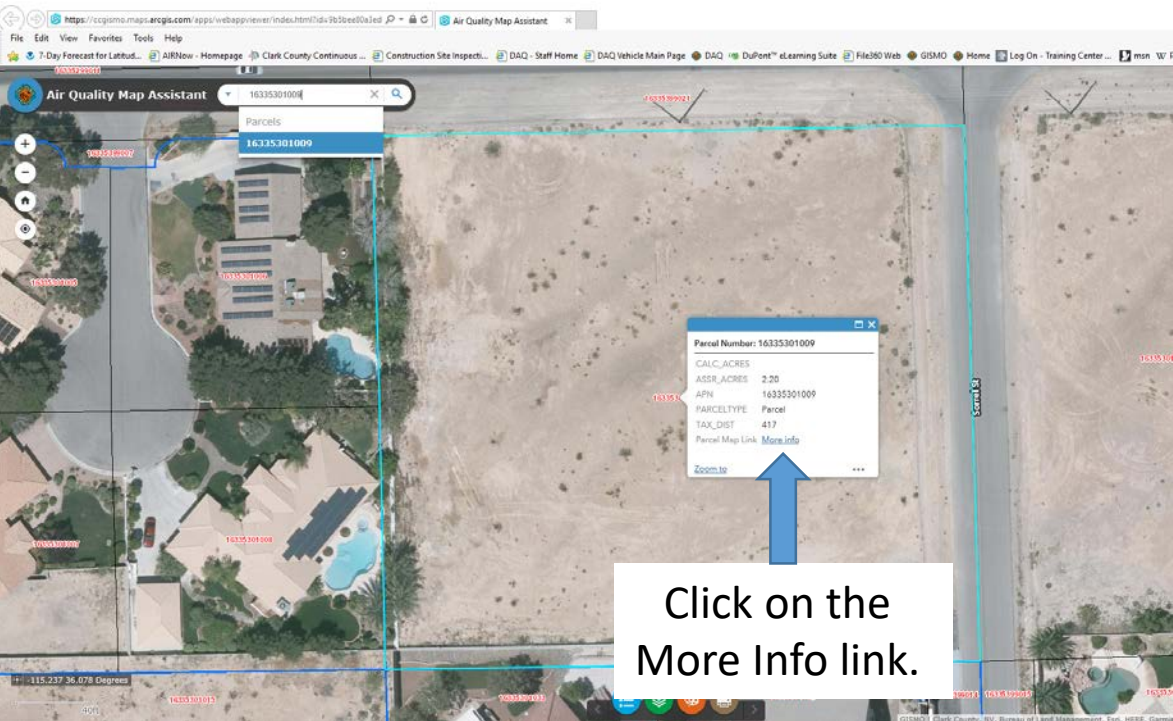
- Go to the Air Quality Map Assistant, <https://ccgismo.maps.arcgis.com/apps/webappviewer/index.html?id=9b5bee80a3ed497a95a44fb94f03d6d1>
- Find your parcel by the search option
- The parcel information will come up
- Click on the More info link (next to Parcel Map Link), Assessor's Parcel map (see below aerial), print (make sure to "fit the page" for 8.5" x 11"), and mark out your work area.



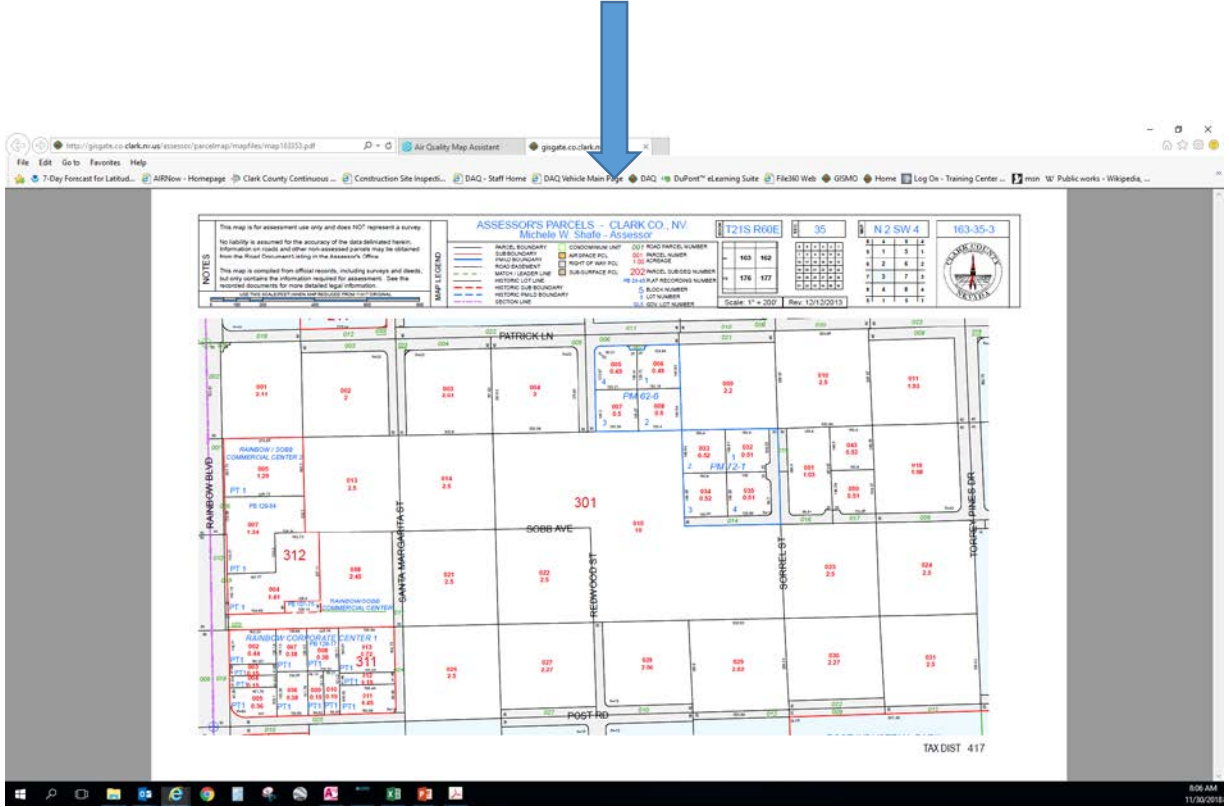
Find your parcel by entering it into the Search Option.

This map will open on a separate tab.

Print, mark, and submit on an 8 1/2" x 11" page.



Click on the More Info link.



Updated 11/29/18

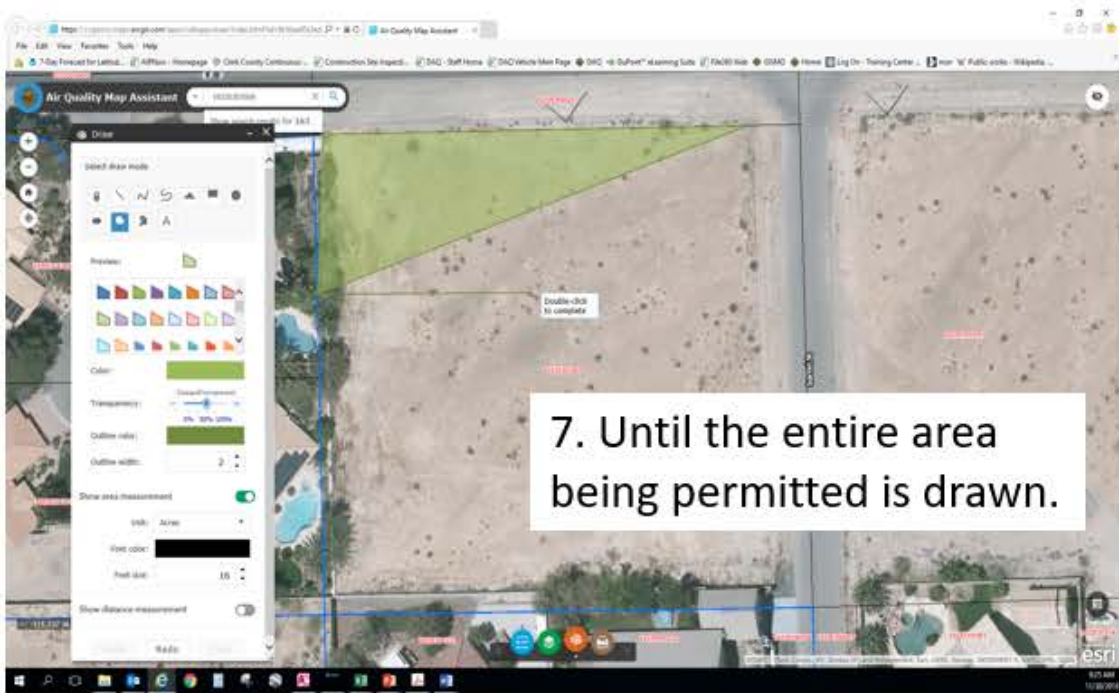
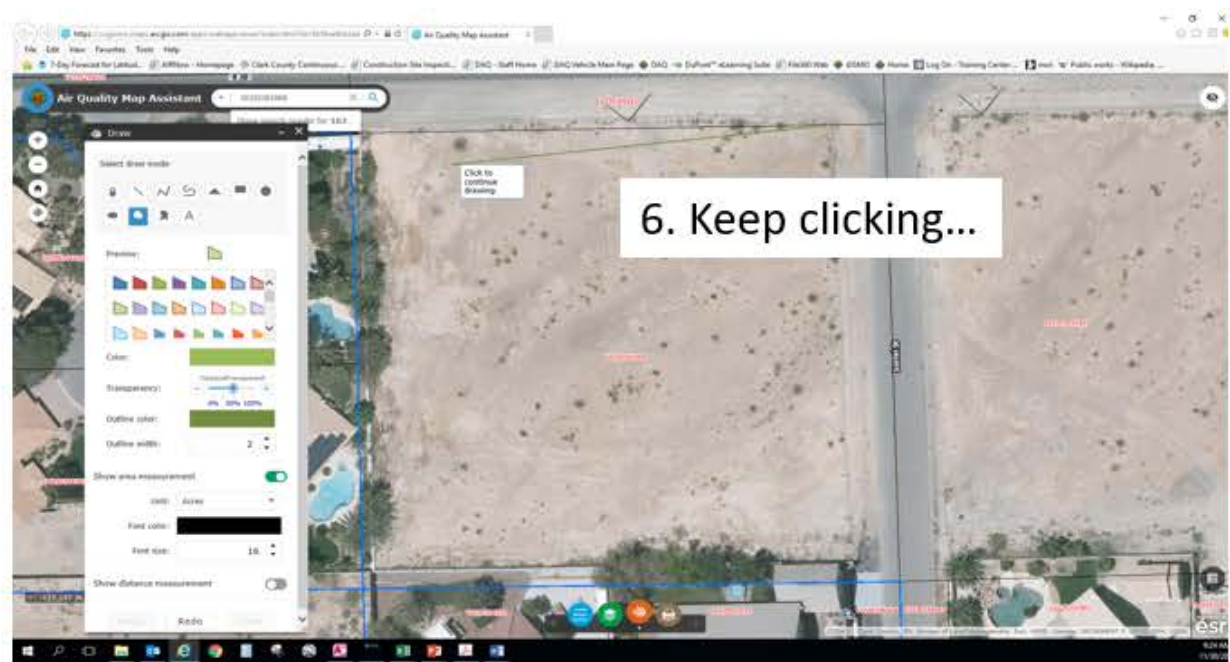
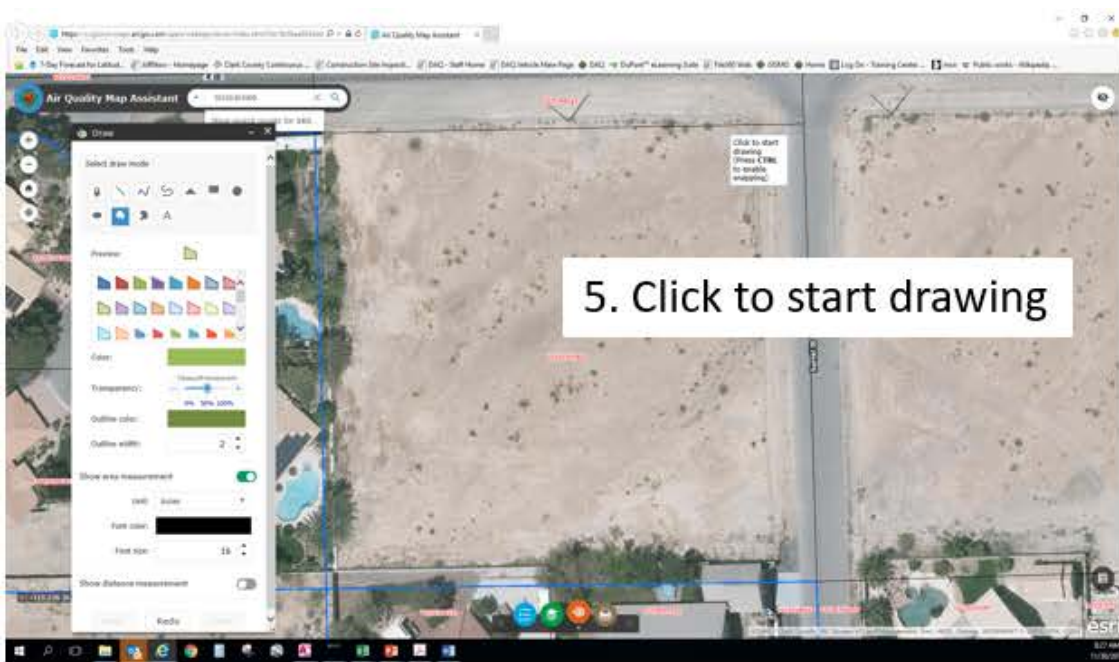
The Air Quality Map Assistant also offers measuring tools.

To Draw a Polygon

The screenshot displays the Air Quality Map Assistant web application interface. A search bar at the top contains the address 16335301009. A 'Draw' tool panel is open, showing various drawing options. Four numbered callouts provide instructions:

1. Click on the Draw Tool
2. These options will come up. Click on the Polygon draw mode.
3. Select a color.
4. Click to return an area measurement on the map.

The interface includes a map of a desert area with a river labeled 'Sorrell St'. The 'Draw' panel includes a 'Select draw mode' section with icons for Point, Line, Polygon, and other shapes. The 'Preview' section shows a grid of color swatches. Below the swatches are controls for 'Color', 'Transparency' (0% to 100%), 'Outline color', and 'Outline width' (set to 2). At the bottom of the panel are 'Show area measurement' and 'Show distance measurement' toggle switches, and 'Undo', 'Redo', and 'Clear' buttons.

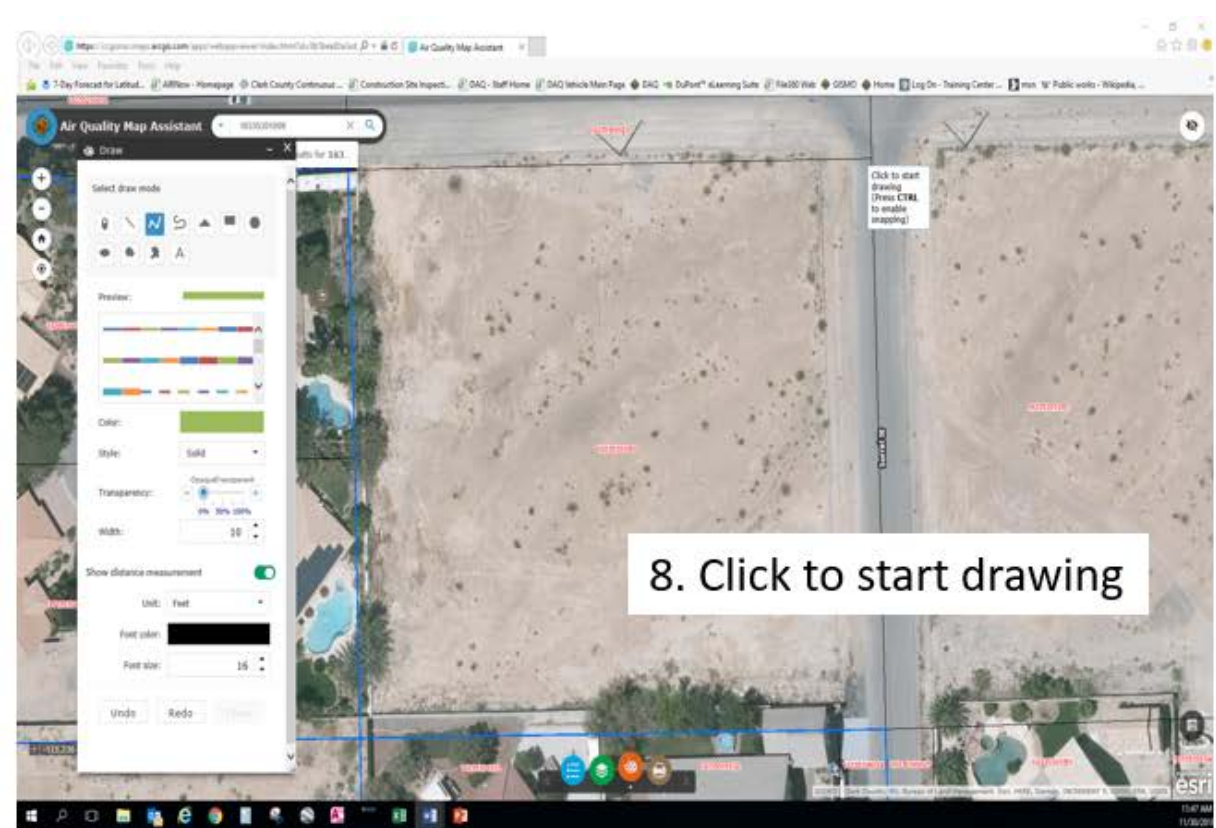


The Air Quality Map Assistant also offers measuring tools.

To Draw a Polyline

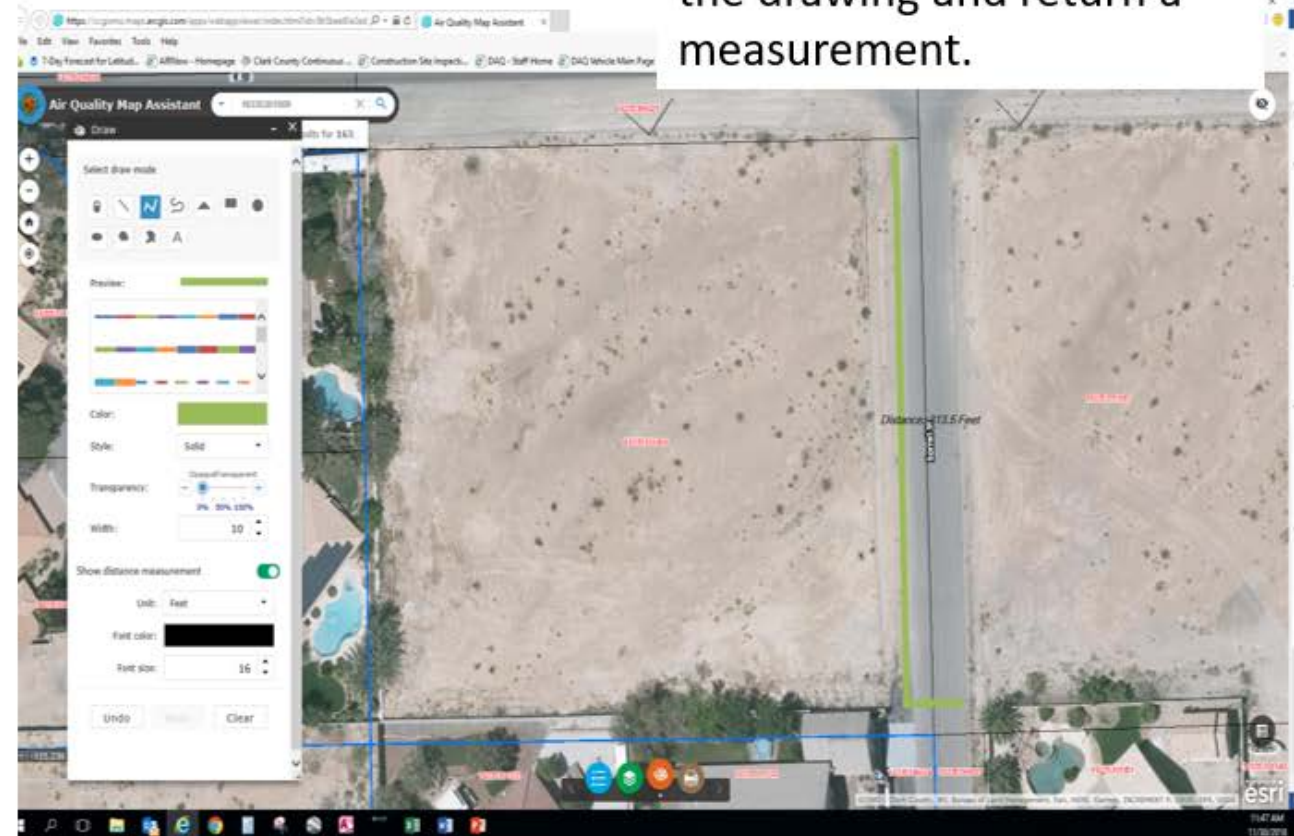
The screenshot displays the 'Air Quality Map Assistant' web application interface. A 'Draw' tool panel is open on the left side of the map. The panel includes a 'Select draw mode' section with icons for Point, Line, Polyline, Polygon, and Area. Below this is a 'Preview' section showing a color palette. Further down are settings for 'Color' (a green swatch), 'Style' (set to 'Solid'), 'Transparency' (a slider from 0% to 100%), and 'Width' (set to 10). At the bottom of the panel are 'Show distance measurement' (checked), 'Unit' (set to 'Feet'), 'Font color' (black), and 'Font size' (16). There are also 'Undo', 'Redo', and 'Clear' buttons. The map background shows an aerial view of a residential area with a street labeled 'Sorrell St'. A blue line is drawn across the map, and a red arrow points to the 'Draw Tool' icon in the bottom toolbar. Six numbered callout boxes with blue arrows point to specific elements in the interface:

1. Click on the Draw Tool
2. These options will come up. Click on the Polyline draw mode.
3. Select a color.
4. Enter the width of the offsite.
5. Click to return a distance measurement on the map.
6. Change the unit of measure to feet.



8. Click to start drawing

8. Double click to complete the drawing and return a measurement.



Acceptable Linear Project Map

176206 MON - U

1

NOTES
 This map is for assessment use only and does NOT represent a survey.
 No liability is assumed for the accuracy of the data delineated herein. Information on roads and other non-assessed parcels may be obtained from the Road Document Listing in the Assessor's Office.
 This map is compiled from official records, including surveys and deeds, but only contains the information required for assessment. See the recorded documents for more detailed legal information.
 USE THE ASSASSOR'S VALUE MAP RECORDS FROM THE PLAT ORIGINAL.

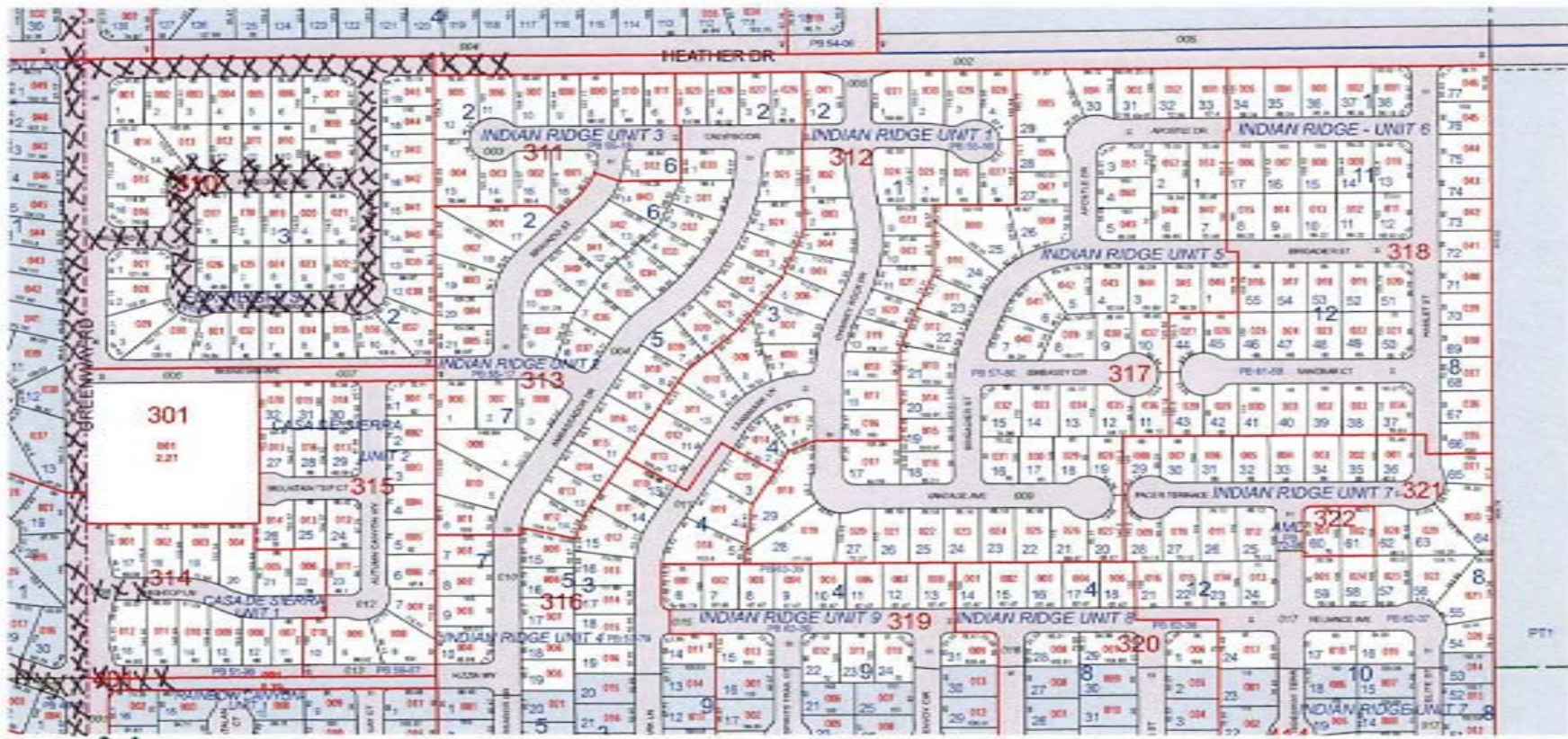
MAP LEGEND

- PARCEL BOUNDARY
- SUB BOUNDARY
- PLAT BOUNDARY
- ROAD EASEMENT
- MATCH/LEADER LINE
- HISTORIC LOT LINE
- HISTORIC SUB BOUNDARY
- HISTORIC PARCEL BOUNDARY
- SECTION LINE
- CONDOMINIUM UNIT
- MIN SPACE PCL
- RIGHT OF WAY PCL
- SUB-SURFACE PCL
- ROAD-PARCEL NUMBER
- PARCEL NUMBER
- ACREAGE
- PARCEL SUB-SEC NUMBER
- PLAT RECORDING NUMBER
- BLOCK NUMBER
- LOT NUMBER
- CL. DEV. LOT NUMBER

ASSASSOR'S PARCELS - CLARK CO., NV.
 Michele W. Shafer - Assessor

T22S R63E **29** **N 2 SW 4** **179-29-3**

Scale: 1" = 200' Rev: 02/08/2011



Greenward Road

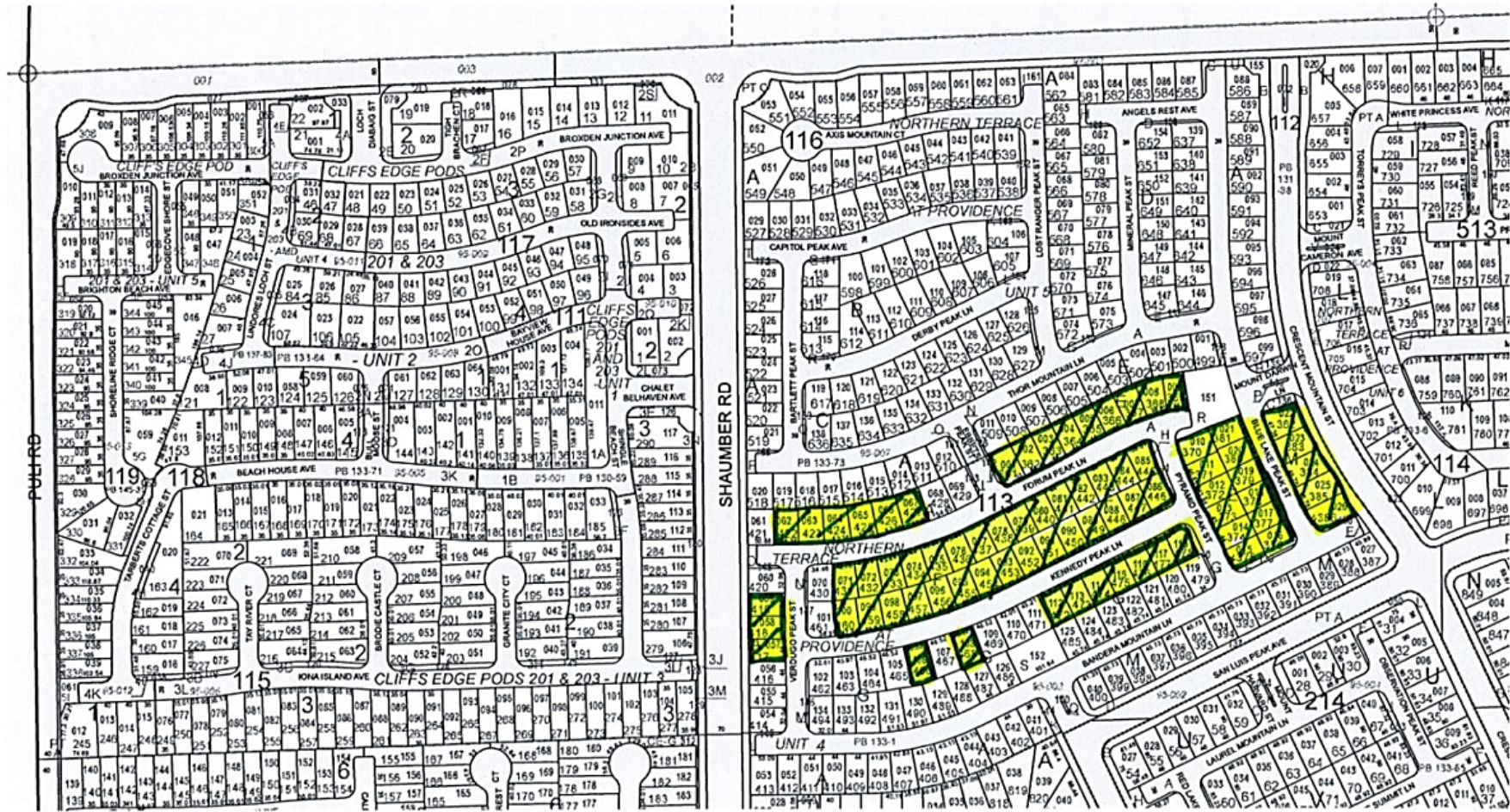
$$5200' \times 40' = 208,000 \text{ ft}^2 / 43,560 = 4.8 \text{ acres}$$

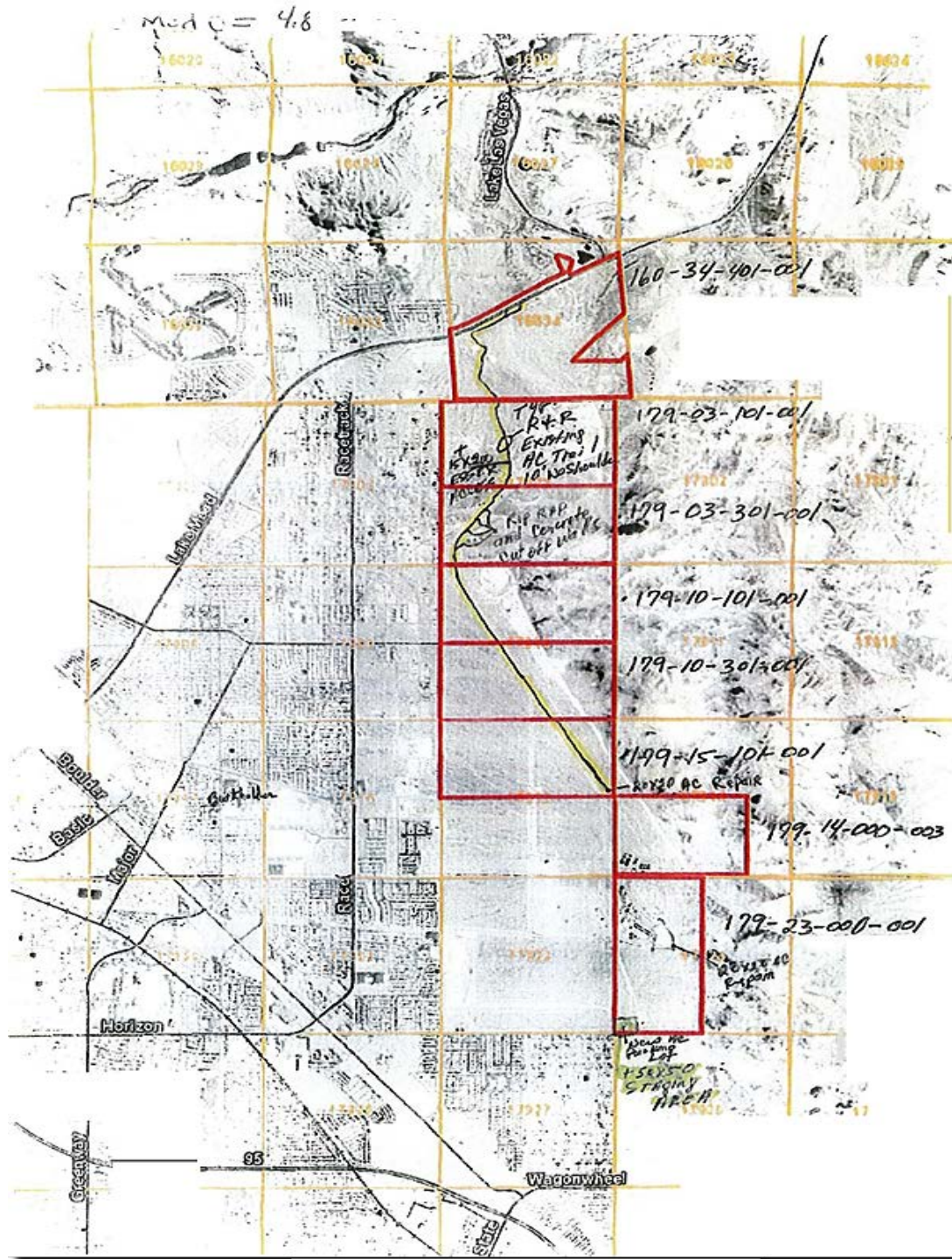
Updated 11/29/18

TAX DIST 505

Acceptable Assessor's Parcel Map

<p>NOTES</p> <p>This map is for assessment use only and does NOT represent a survey.</p> <p>No liability is assumed for the accuracy of the data delineated herein. Information on roads and other non-assessed parcels may be obtained from the Road Document Listing in the Assessor's Office.</p> <p>This map is compiled from official records, including surveys and deeds, but only contains the information required for assessment. See the recorded documents for more detailed legal information.</p> <p>USE THIS SCALE (FEET) WHEN MAP REDUCED FROM 11X17 ORIGINAL</p>	<p>MAP LEGEND</p> <ul style="list-style-type: none"> PARCEL BOUNDARY SUB BOUNDARY PMLD BOUNDARY ROAD EASEMENT MATCH / LEADER LINE HISTORIC LOT LINE HISTORIC SUB BOUNDARY HISTORIC PMLD BOUNDARY SECTION LINE 	<p>ASSESSOR'S PARCELS - CLARK CO., NV. Michele W. Shafe - Assessor</p>		<p>BOOK T19S R59E</p> <table border="1"> <tr><td>099</td><td>100</td></tr> <tr><td>126</td><td>125</td></tr> <tr><td>137</td><td>138</td></tr> </table>	099	100	126	125	137	138	<p>REC. 13</p> <table border="1"> <tr><td>1</td><td>2</td><td>3</td><td>4</td></tr> <tr><td>5</td><td>6</td><td>7</td><td>8</td></tr> <tr><td>9</td><td>10</td><td>11</td><td>12</td></tr> <tr><td>13</td><td>14</td><td>15</td><td>16</td></tr> <tr><td>17</td><td>18</td><td>19</td><td>20</td></tr> <tr><td>21</td><td>22</td><td>23</td><td>24</td></tr> <tr><td>25</td><td>26</td><td>27</td><td>28</td></tr> <tr><td>29</td><td>30</td><td>31</td><td>32</td></tr> <tr><td>33</td><td>34</td><td>35</td><td>36</td></tr> <tr><td>37</td><td>38</td><td>39</td><td>40</td></tr> <tr><td>41</td><td>42</td><td>43</td><td>44</td></tr> </table>	1	2	3	4	5	6	7	8	9	10	11	12	13	14	15	16	17	18	19	20	21	22	23	24	25	26	27	28	29	30	31	32	33	34	35	36	37	38	39	40	41	42	43	44	<p>MAP N 2 NW 4</p> <table border="1"> <tr><td>4</td><td>3</td><td>2</td><td>1</td></tr> <tr><td>5</td><td>1</td><td>5</td><td>1</td></tr> <tr><td>6</td><td>2</td><td>6</td><td>2</td></tr> <tr><td>7</td><td>3</td><td>7</td><td>3</td></tr> <tr><td>8</td><td>4</td><td>8</td><td>4</td></tr> <tr><td>9</td><td>5</td><td>9</td><td>5</td></tr> <tr><td>10</td><td>6</td><td>10</td><td>6</td></tr> <tr><td>11</td><td>7</td><td>11</td><td>7</td></tr> <tr><td>12</td><td>8</td><td>12</td><td>8</td></tr> <tr><td>13</td><td>9</td><td>13</td><td>9</td></tr> <tr><td>14</td><td>10</td><td>14</td><td>10</td></tr> <tr><td>15</td><td>11</td><td>15</td><td>11</td></tr> <tr><td>16</td><td>12</td><td>16</td><td>12</td></tr> <tr><td>17</td><td>13</td><td>17</td><td>13</td></tr> <tr><td>18</td><td>14</td><td>18</td><td>14</td></tr> <tr><td>19</td><td>15</td><td>19</td><td>15</td></tr> <tr><td>20</td><td>16</td><td>20</td><td>16</td></tr> </table>	4	3	2	1	5	1	5	1	6	2	6	2	7	3	7	3	8	4	8	4	9	5	9	5	10	6	10	6	11	7	11	7	12	8	12	8	13	9	13	9	14	10	14	10	15	11	15	11	16	12	16	12	17	13	17	13	18	14	18	14	19	15	19	15	20	16	20	16	<p>126-13-1</p>
		099	100																																																																																																																										
126	125																																																																																																																												
137	138																																																																																																																												
1	2	3	4																																																																																																																										
5	6	7	8																																																																																																																										
9	10	11	12																																																																																																																										
13	14	15	16																																																																																																																										
17	18	19	20																																																																																																																										
21	22	23	24																																																																																																																										
25	26	27	28																																																																																																																										
29	30	31	32																																																																																																																										
33	34	35	36																																																																																																																										
37	38	39	40																																																																																																																										
41	42	43	44																																																																																																																										
4	3	2	1																																																																																																																										
5	1	5	1																																																																																																																										
6	2	6	2																																																																																																																										
7	3	7	3																																																																																																																										
8	4	8	4																																																																																																																										
9	5	9	5																																																																																																																										
10	6	10	6																																																																																																																										
11	7	11	7																																																																																																																										
12	8	12	8																																																																																																																										
13	9	13	9																																																																																																																										
14	10	14	10																																																																																																																										
15	11	15	11																																																																																																																										
16	12	16	12																																																																																																																										
17	13	17	13																																																																																																																										
18	14	18	14																																																																																																																										
19	15	19	15																																																																																																																										
20	16	20	16																																																																																																																										
			<p>001 ROAD PARCEL NUMBER 001 PARCEL NUMBER 1.00 ACREAGE 202 PARCEL SUB/SEQ NUMBER PB 24-45 PLAT RECORDING NUMBER 5 BLOCK NUMBER 5 LOT NUMBER 65.5 GOV. LOT NUMBER</p>	<p>Scale: 1" = 200'</p>	<p>Rev: 5/2/2013</p>																																																																																																																								

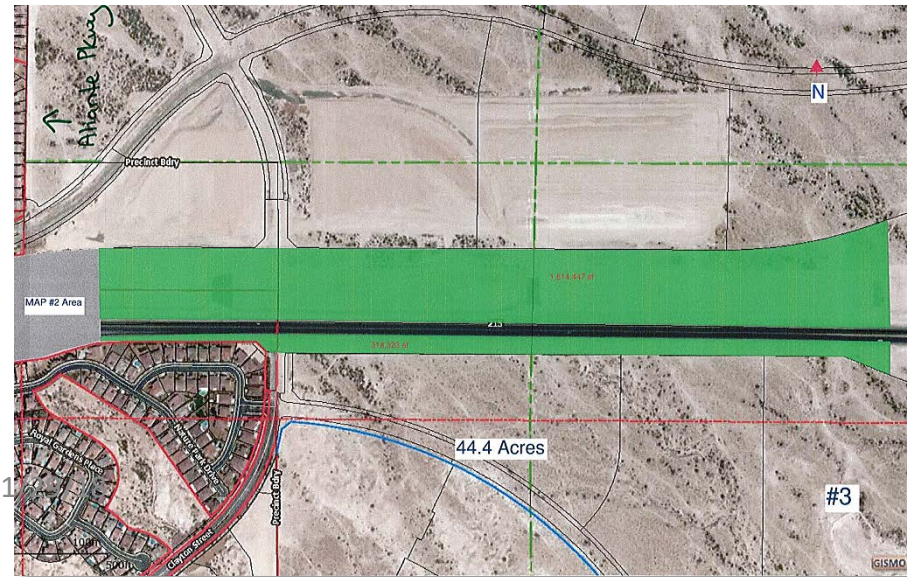




Unacceptable Aerial or Linear Map

* The project boundaries are not clearly defined

Acceptable Aerial Map



Updated 11/

Mapping DOs and DON'Ts

- Do make sure that the whole area being permitted is shown in your aerial

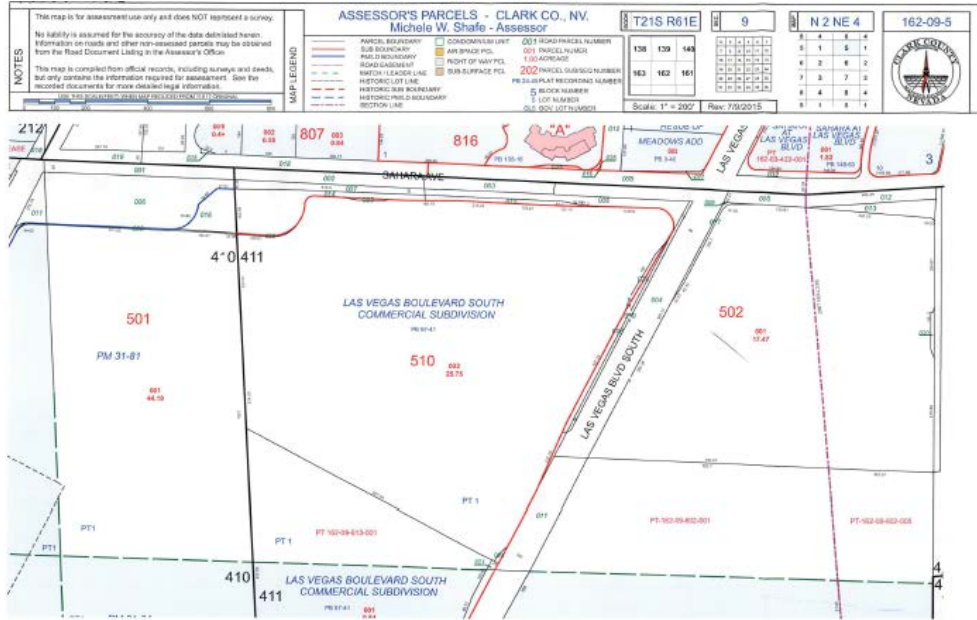


The DCP was submitted for 4.7 acres, but the area on the map measured 3.0 acres.

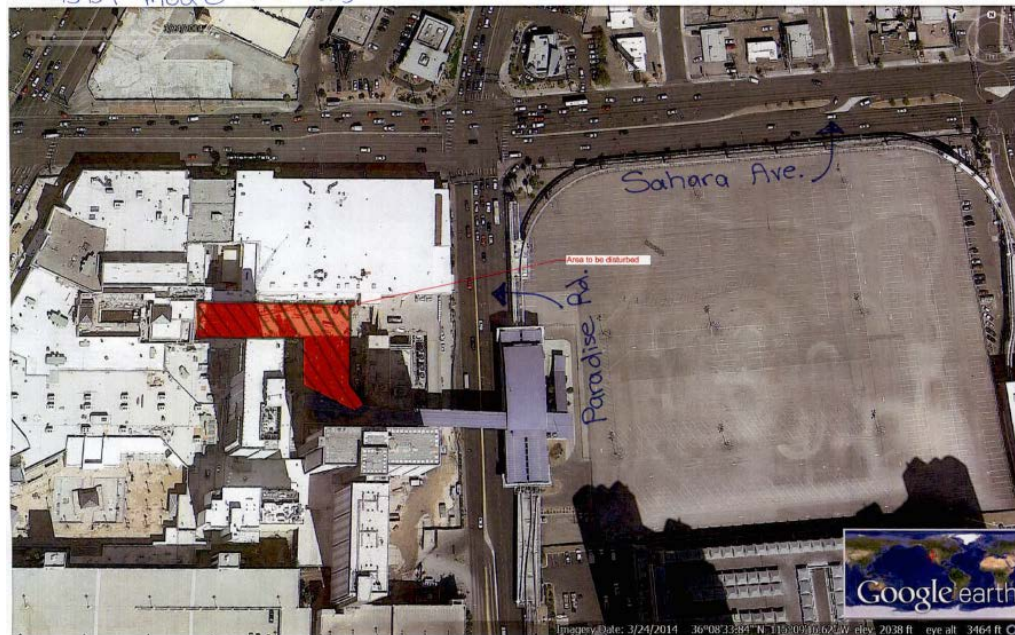
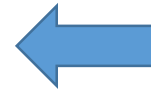
The map was resubmitted to include the missing 1.7 acres.



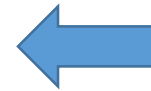
- Do make sure to mark your map



The DCP was submitted for 0.5 acres, but the parcel listed is 17.5 acres and the map was not marked.



A new map was submitted accurately marking the 0.5 acres.



- Do make sure to clearly mark the area that you want to permit



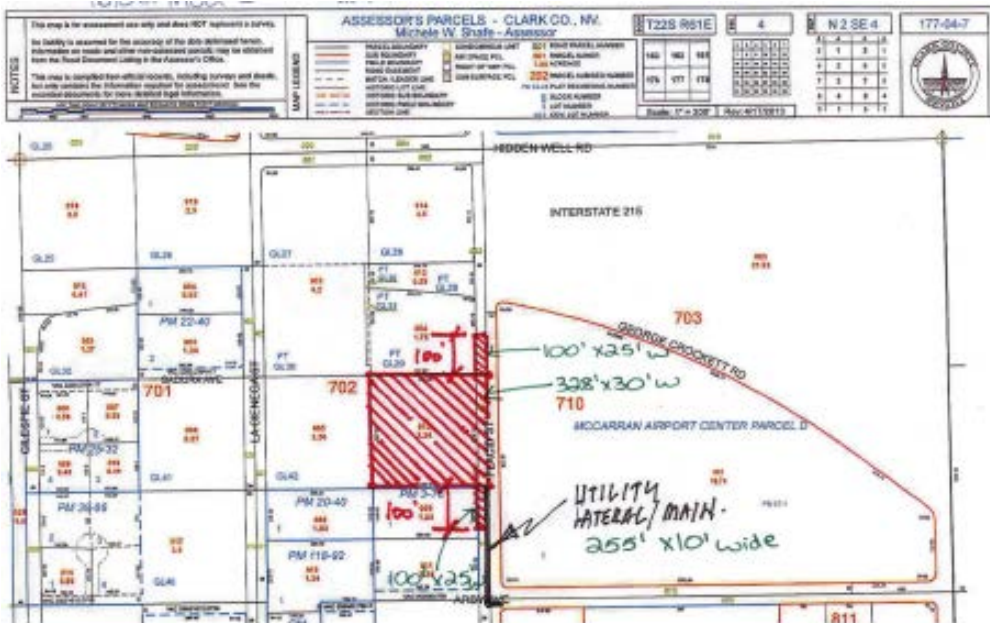
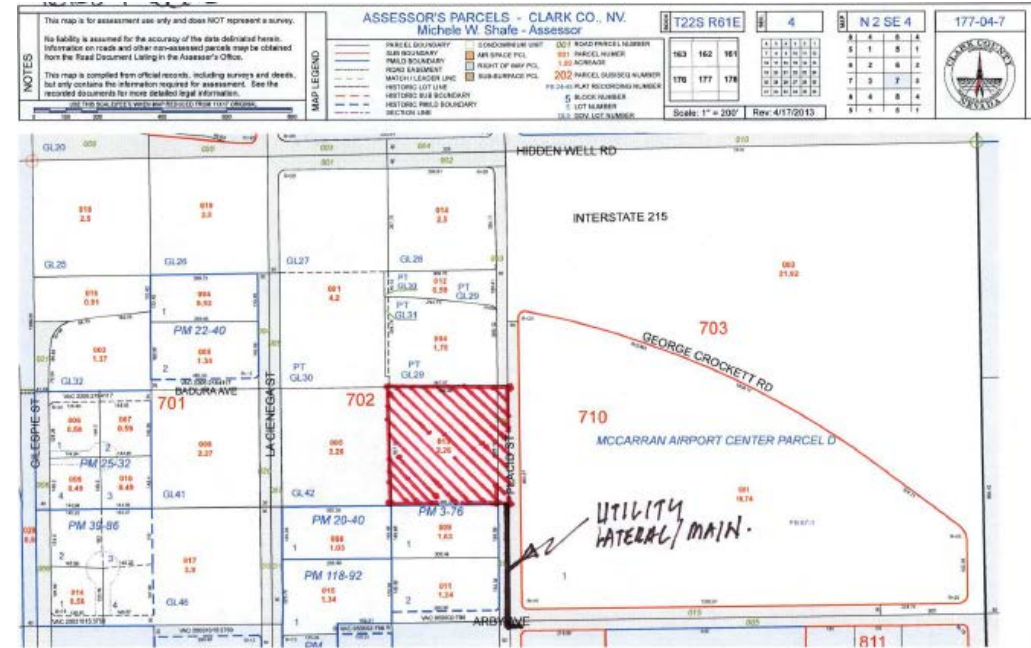
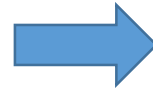
The map does not clearly show the 2.0 acres being permitted.



The map was resubmitted.

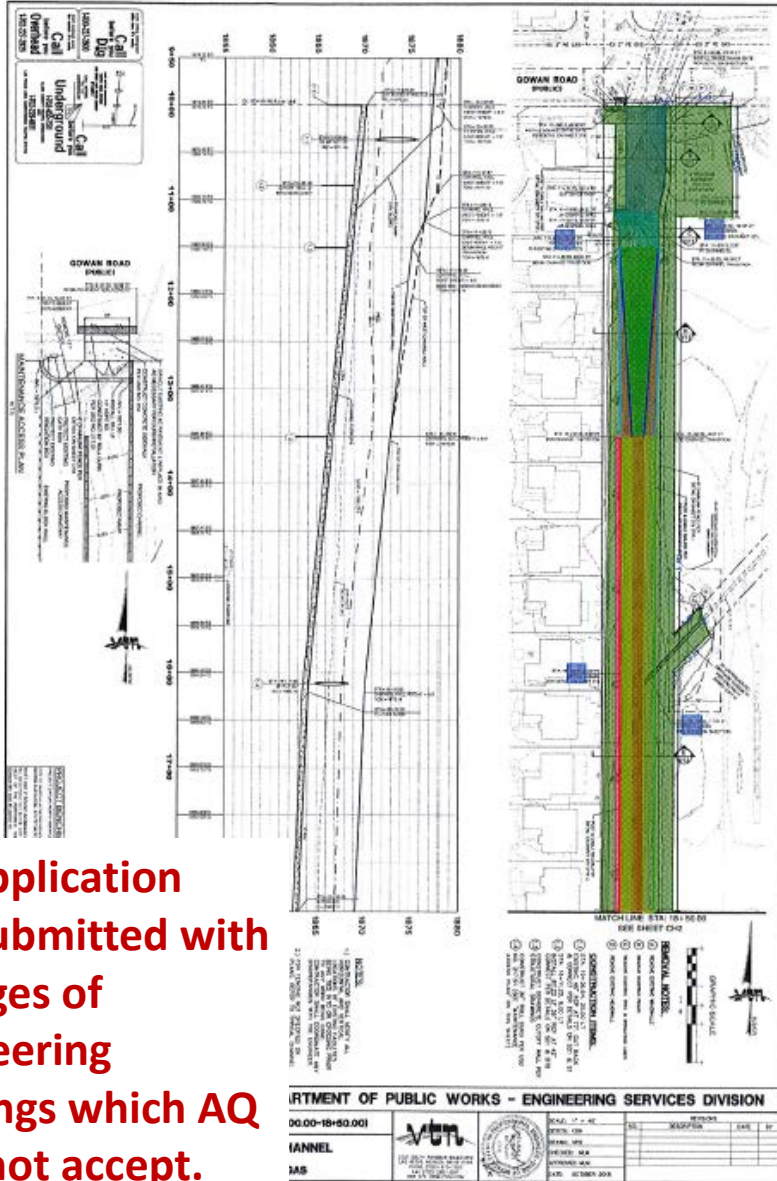
- Do mark the length and width of off-site areas on the map

Offsites on the map did not include measurements.

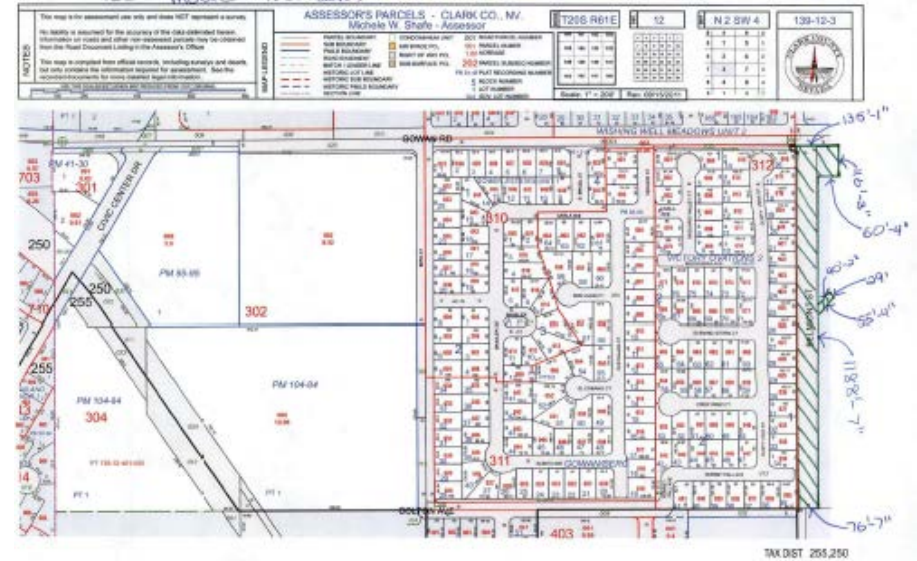


The map was resubmitted to include measurements of all the offsites.

- Do not submit engineering drawings



The application was submitted with 34 pages of engineering drawings which AQ does not accept.



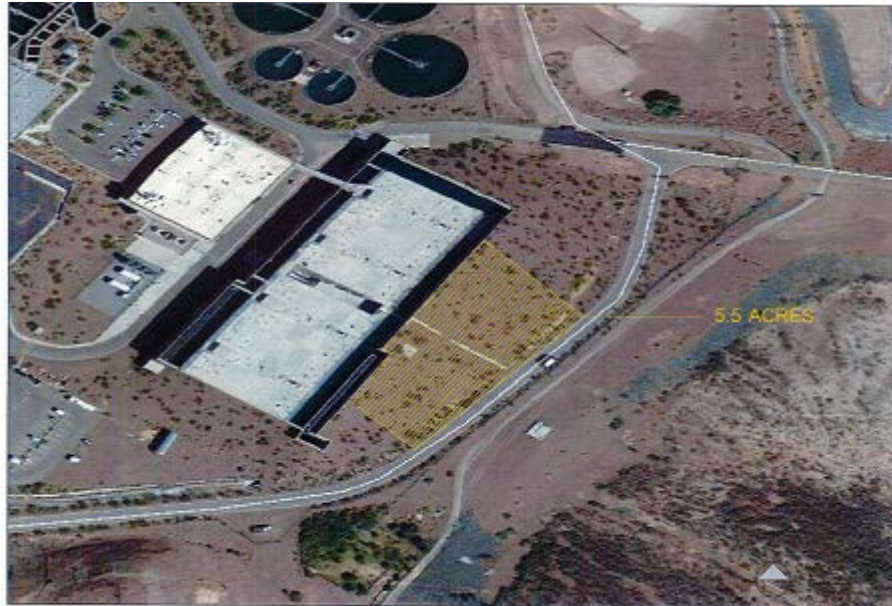
Page 1 of 2



Page 2 of 2

The permittee resubmitted 2 assessor's parcel maps with measurements listed.

- Do make sure that the area marked accurately depicts the acreage



The DCP was submitted for 5.5 acres, but the area on the map measured 1.5 acres.



The map was resubmitted, but the permittee only needed to permit 2.2 acres.

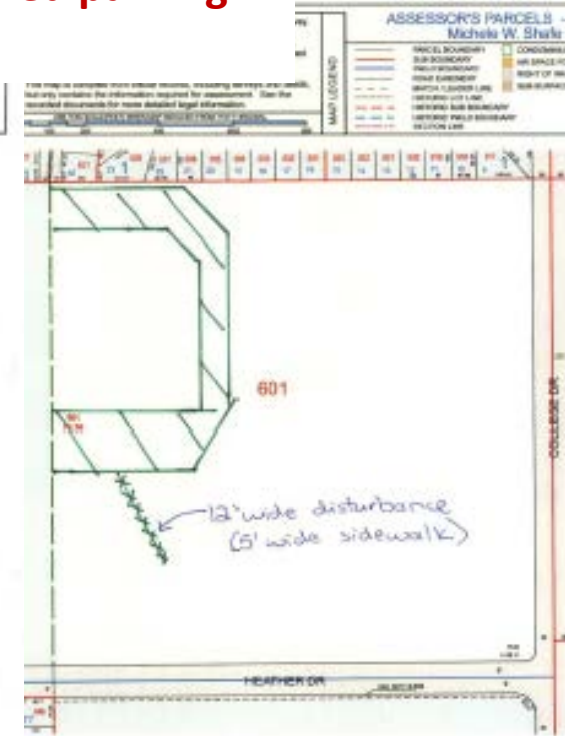
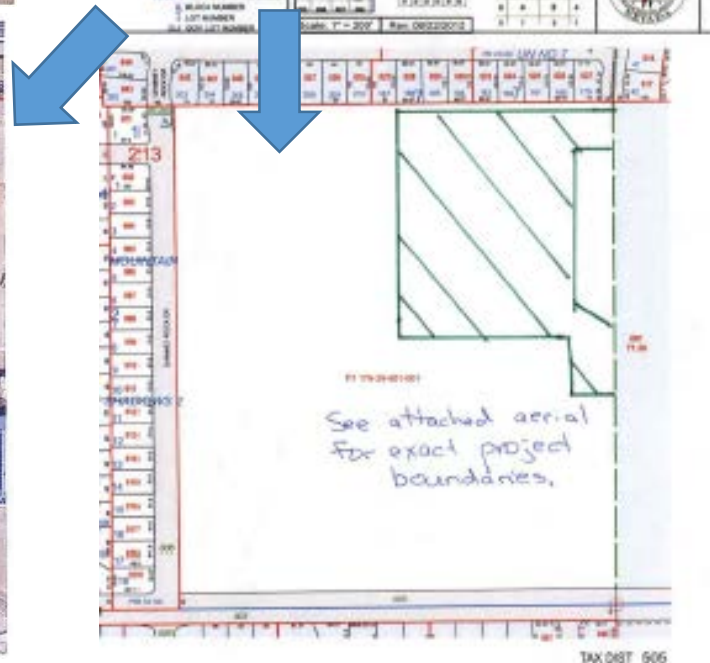
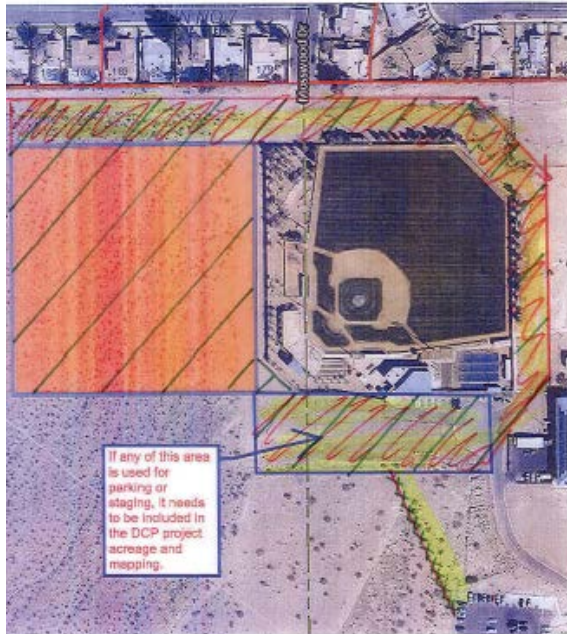


- Do make sure to include all project areas



The DCP was submitted for 4.9 acres, but access and staging areas were not included.

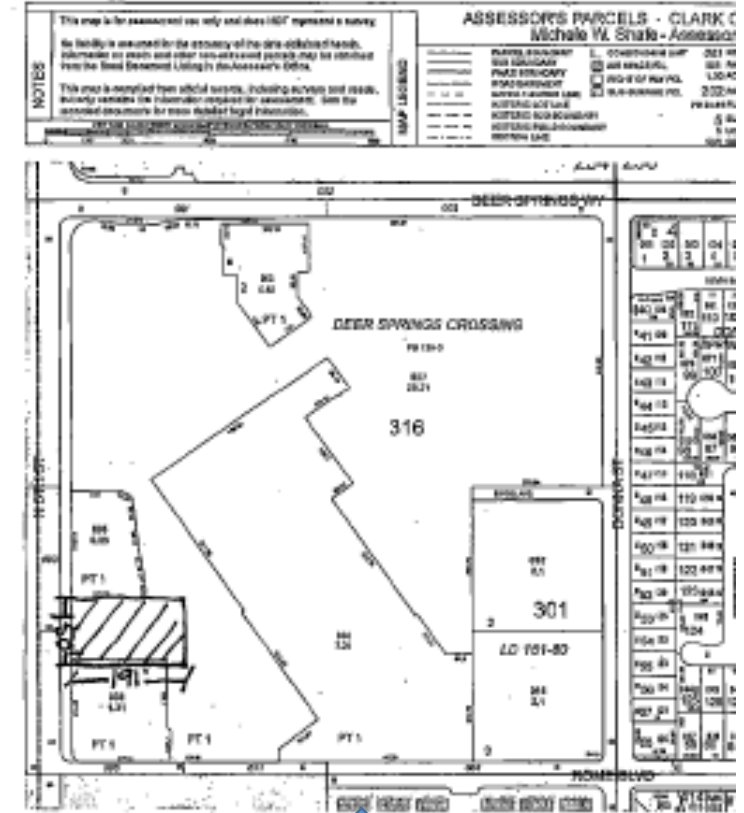
Two maps were resubmitted, the aerial and the assessor's parcel map., increasing the project acreage to 9.2 acres to include access, staging areas, a new paved parking lot and a walkway.



- Do make sure to mark the correct area



The DCP was submitted for 0.7 acres, and two maps were included with the application. The maps showed different areas to permit.



The map was resubmitted marking the correct area to permit.